



\$50 Brick 4" x 8"  
up to 3 lines, 17 spaces a line

\$100 Brick 8" x 8"  
up to 5 lines, 17 spaces a line

Bricks are available for \$50 (4"x8") or \$100 (8"x8"). Your inscription might be your name and message or a tribute to someone you cherish.

BRICKS ARE ORDERED  
TWO TIMES A YEAR

Orders must be placed with committee prior to these dates.

### Memorial Garden Path

Help build a pathway to remember friends and family. By purchasing an inscribed brick on the pathway, you can honor someone important in your life that you have lost.

Your brick will be placed in the path, which curve through the tranquil and beautiful Memorial Garden. This beautiful walkway complements the garden and is a place for meditation and reflection.

Your contribution will support the construction and maintenance of the Brushton-Moira Memorial Garden.

The Mission of the Memorial Garden Committee is:

- To have a plan for appropriate tributes for our school community members.
- To provide support for our families who are struck by tragedy.
- To develop a garden that can be expanded over time.
- To develop guidelines for tributes.

### Memorial Garden Guidelines

1. Please notify Joel Avery at 529-6556, if you would like to donate a plant or purchase an item for the Memorial Garden.
2. All additions and changes to the Memorial Garden must be approved by the committee.

## Brushton-Moira Memorial Garden A Place for Peaceful Healing

Support this vision by joining the Memorial Garden with the purchase of a personalized brick.

Donations are also welcome.



Brushton-Moira Central School  
Memorial Garden  
758 County Route 7  
Brushton, New York 12916  
Attn: Christina Dufrane  
(518)529-7342 ext. 1104  
[www.bmcscd.org](http://www.bmcscd.org)



# BMC MEMORIAL GARDEN COMMITTEE

## ENGRAVED BRICK ORDER FORM

4"x8" Engraved Bricks are \$50 each (1-3 lines of text)

8"x8" Engraved Bricks are \$100 each (1-5 lines of text)

I wish my Engraved Brick to read:


4x8    check     8x8  
 one   

Bricks can be engraved with up to 17 characters per line. Symbols are available for \$5 each. Spaces between words/names count as characters.

All brick engraving and designs must be approved by the Memorial Garden Committee.

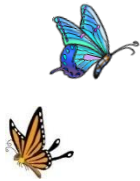
ORDERED BY: \_\_\_\_\_ Symbol: \_\_\_\_\_

Name \_\_\_\_\_

Phone ( ) \_\_\_\_\_ Order date \_\_\_\_\_

Address \_\_\_\_\_ City \_\_\_\_\_

State \_\_\_\_\_ Zip \_\_\_\_\_



I would like to have a gift card sent. Please send the gift card to:

\_\_\_\_\_

Payment by check, must be paid in full at time of order. Please make check payable to Brushton-Moira Central School, and mail to 758 County Route 7, Brushton, New York 12916, Attn: Christina Dufrane. Call (518)529-7342 ext. 1106 for information. Please use separate order form for each order.

Order by dates are:  
 May 1st  
 September 1st



\_\_\_\_\_

### Brushton-Moira Memorial Garden Order Form

Date \_\_\_\_\_ Received from \_\_\_\_\_

For \_\_\_\_\_ \$ \_\_\_\_\_

Received by \_\_\_\_\_ Cash \_\_\_\_\_ / Check No. \_\_\_\_\_